

Juvenile Case Manager

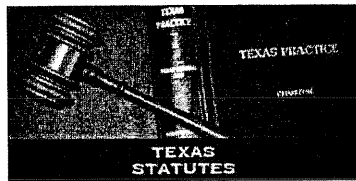
Presented by:
Tina Heine
Juvenile Case Manager
Georgetown Municipal Court

Objectives

- Identify the statutes relating to Case Management
- Describe what a Case Manager can be in your city
- Discuss the benefits of having Case Managers
- Create an action plan for establishing a Case Management Program

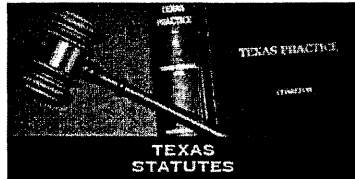
The Statutes

CCP Article 45.056
Authority to Employ Juvenile Case Managers



The Statutes

CCP Article 102.0174
Creation of a Juvenile Case
Manager Fund



Legislative Intent

Recognize the importance of case management at the early stages of criminal activity

Provide for a case manager fund

Intent was for a case manager to be:

- . part court clerk
- . part probation officer
- . part social worker



Three Basic Models

1. Compliance Officer Model

2. Probation Officer Model

3. Social Worker Model



Compliance Officer Model

- Includes clerk-like duties
- Little to no contact with juvenile
- Reports non-compliance to the court



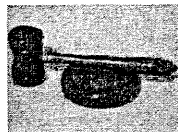
Probation Officer Model

- Meets regularly with juvenile
- Oversees the court order
- Reports back to the court



Social Worker Model

- Meets regularly with juvenile and family
- Assessment of needs
- Link to appropriate services
- Monitor compliance



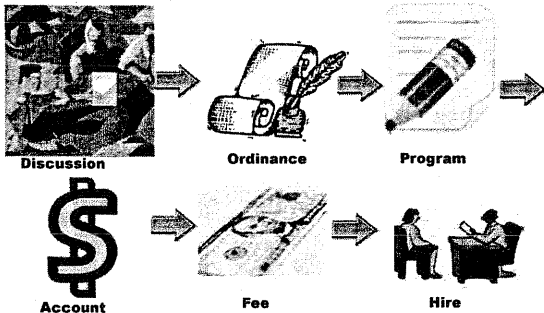


What is the best approach for your court?

Benefits of having Case Managers

- **Maintain juvenile dockets**
- **Monitor compliance of court orders**
- **Promote defendants accountability**
- **Gives credibility to the program**
- **Reduce recidivism**

Getting Started



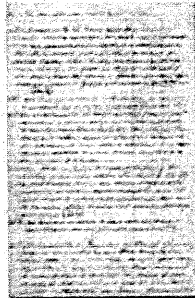
True or False?

1. It is generally accepted that minor offenses are "gateway behavior" to delinquency



True or False?

2. A City Ordinance is required before your city begins collecting the case manager fee



True or False?

3. The fee set by your city can be less than \$5



True or False?

4. The money from the case manager fee can be used for supplies, office space and operating expenses



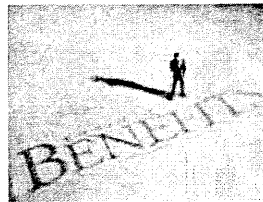
True or False?

5. Small cities and/or counties may agree to employ a case manager and share expenses



True or False?

6. Must a case manager be employed full time and receive benefits

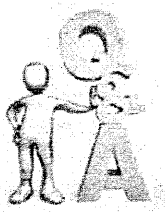


True or False?

7. Your city/county must collect a juvenile case manager fee



Questions or Comments...



Can you see this program working in your city or county

**Tina Heine
Juvenile Case Manager
Teen Court Coordinator
Georgetown Municipal Court
tina.heine@georgetown.org
512-931-7712**
